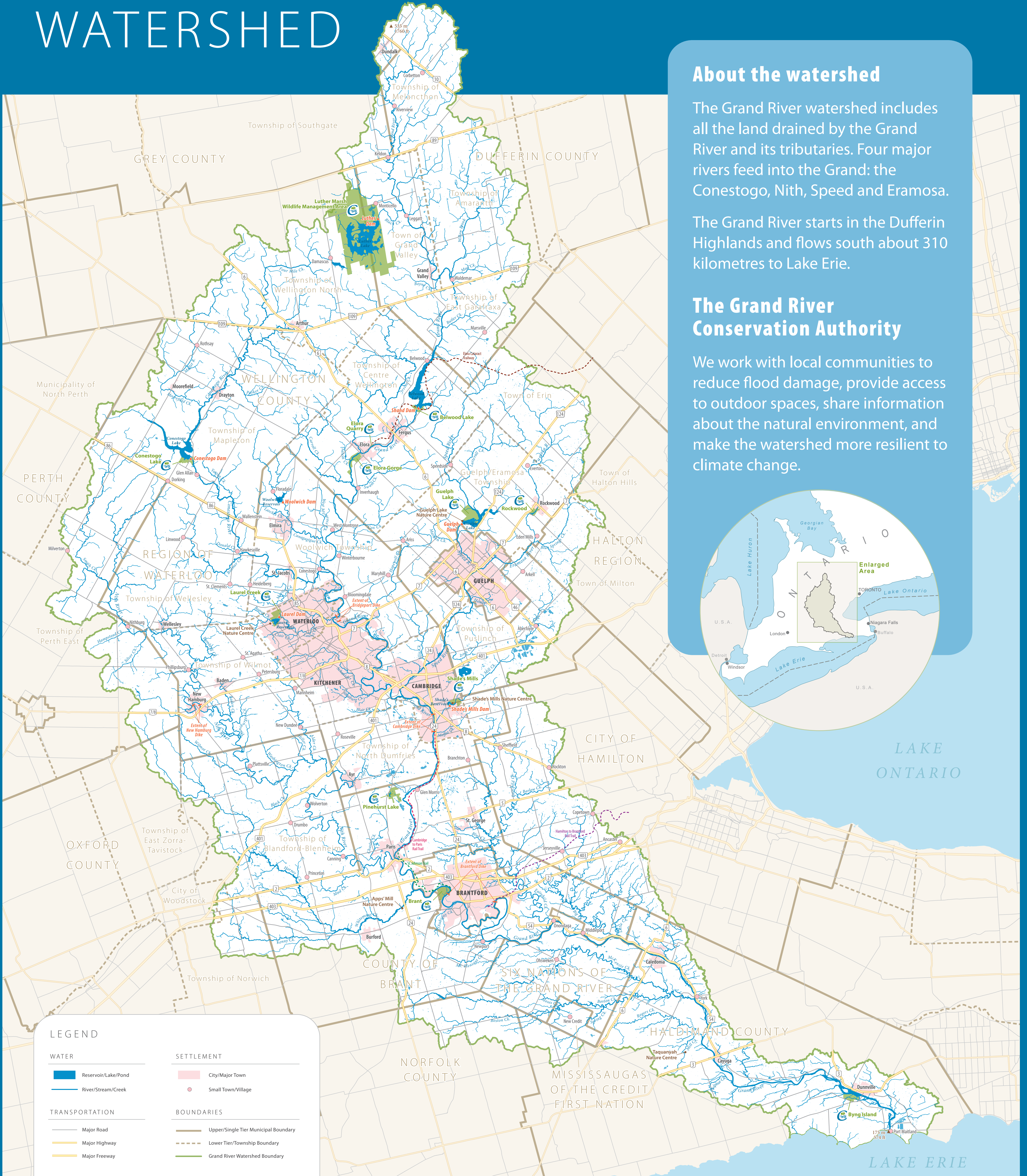


THE GRAND RIVER WATERSHED



About the watershed

The Grand River watershed includes all the land drained by the Grand River and its tributaries. Four major rivers feed into the Grand: the Conestogo, Nith, Speed and Eramosa.

The Grand River starts in the Dufferin Highlands and flows south about 310 kilometres to Lake Erie.

The Grand River Conservation Authority

We work with local communities to reduce flood damage, provide access to outdoor spaces, share information about the natural environment, and make the watershed more resilient to climate change.



LEGEND

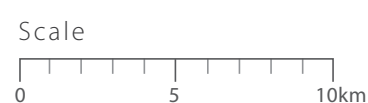
WATER	SETTLEMENT
Reservoir/Lake/Pond	City/Major Town
River/Stream/Creek	Small Town/Village
TRANSPORTATION	BOUNDARIES
Major Road	Upper/Single Tier Municipal Boundary
Major Highway	Lower Tier/Township Boundary
Major Freeway	Grand River Watershed Boundary
GRCA FEATURES	Rail Trails
Major Dam	Elora-Cataract Trailway
Major Dike (Extent)	Cambridge to Paris Rail Trail
Conservation Area	SC Johnson Trail
Nature Centre	Hamilton to Brantford Rail Trail

© Grand River Conservation Authority, 2020. Map published in April, 2020. This map is for illustrative purposes only and the Grand River Conservation Authority (GRCA) takes no responsibility for, nor guarantees, the accuracy of all the information contained on this map. Any interpretations or conclusions drawn from this map are the sole responsibility of the user. This map should not be used for navigation or analysis.

GRCA Data Sources: This map utilizes various data sets developed and made available on the GRCA Open Data website at data.grandriver.ca.

Other Data Sources: Contains information under the Open Government Licence - Ontario. © Queen's Printer for Ontario, 2020.

The GRCA values your feedback on the accessibility of the goods, services and facilities we provide. If you have comments, please visit the Accessibility section of our website at www.grandriver.ca for details or contact us at 1-866-900-4722 for assistance.



Our Vision:

A healthy watershed where we live, work, play and prosper in balance with the natural environment.

Our Values:

